

**2023**

# **PRODUCT CATALOGUE**

LIFE-SCIENCE RESEARCH AUTOMATION

## AMGEL247PRO

Endless capacity to integrate new automated hardware on the same platform:

- Liquid Handler X 2
- Magnetic Module
- Temperature Module
- Bioshake 3000-T ELM
- Robotic Thermocycler
- Plate Seal Remover
- Plate Sealer
- Cooling Centrifuge
- Labware Carousel
- Robotic Fridge / Freezer
- Industrial Robotic Arm
- Electrical Automation
- HEPA Filters
- UV-C Decontamination Lights
- Waste Bins
- Biohazard Bins



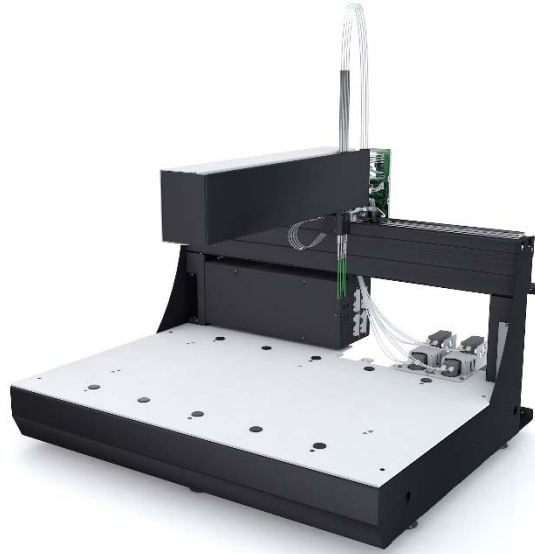


# **AMGEL 247 PRO**

## **Equipment**



## LIQUID HANDLER



- Flexible: Choose between liquid or air dispensing and various worktable sizes for your application requirement.
- Scalable and Flexible: 2, 4 or 8 independent Y and Z pipetting channels with variable spacing capabilities to match various throughput requirements.
- Proven and Reliable: Backed by Tecan's 40 years of development experience and commitment to highest standards
- Channel Grippers: Use the existing channels as gripper extensions to eliminate the need for an additional arm for labware handling.
- Broad range of pipetting volumes: The low maintenance Cavro Pulssar PBC (piston) Pump offers a 5  $\mu$ l to 1,000  $\mu$ l liquid handling range for broad application flexibility, and the new Air Restriction Pipettor (ARP) Technology offers a volume range from 1  $\mu$ l to 5000  $\mu$ l, combine with disposable tips and it is perfect for genomic applications.
- Auto Alignment: makes for quick robotic set-up and maintenance at the end-user site.
- Tecan MAPlinx™ software: A software development tool for easy programming: a) Higher level command functions for easy robotic programming, b) Multichannel synchronization and collision avoidance, and c) Drag and drop customizable worktable editor.
- 3D Simulator: Emulates actual hardware commands in 3D, so software development can start before the hardware arrives.

Brand: *TECAN*

Model: *Cavro® Magni Flex*



## LIQUID HANDLING ROBOT UNIT



- Compact footprint: 63cm x 57cm x 66cm / 25in x 22.5in x 26in (W, D, H)
- Pipette configurations: Single and 8-channel pipetting
- 2-pipette mounts, for a configuration of 1 or 2 single or 8-channel pipettes. Pipettes are easily interchangeable
- Deck: 11 deck slots enable countless configurations
- Deck slots are compatible with standard SBS dimensions. Deck also includes a removable trash bin
- Connectivity: Wi-Fi 2.4 GHz IEEE 802.11b/g/n, USB 2.0
- Weight: 48kg or 105.8 Lb
- Integrated video camera (Included for future or custom functionality)
- Audio: Integrated audio system (Included for future or custom functionality)
- Power Requirements
- Robot Power Input: 36VDC, 6.1A
- Power Adapter Input: 100-240VAC, 50/60Hz, 4.0A/115VAC, 2.0A/230VAC
- Frame composition: Rigid steel and CNC aluminium design
- Operating Temperature & Relative Humidity
- Recommended 20-24C Recommended 40-60% RH
- Interface: Windows 10, macOS 10.10 or later, Ubuntu 12.04 or later
- Tip compatibility: Use Opentrons Tips and Opentrons Filter Tips
- Opentrons guarantees the performance of Opentrons Tips which were specifically designed for the OT-2. The OT-2 was designed to accommodate all universal bore tip types, but tip quality and dimensions can vary significantly so third-party tip performance cannot be guaranteed by Opentrons.
- One-year warranty against manufacturer defects
- Return Policy: 60 days, 100% risk free
- Certifications: CE, FCC
- Tip Handling: Pick up tip, drop tip, Return tip, new tip (always, never, once)
- Liquid Control: Aspirate, Dispense, Aspirate speed, Dispense speed, Blowout, Touch tip, Mix, Air gap



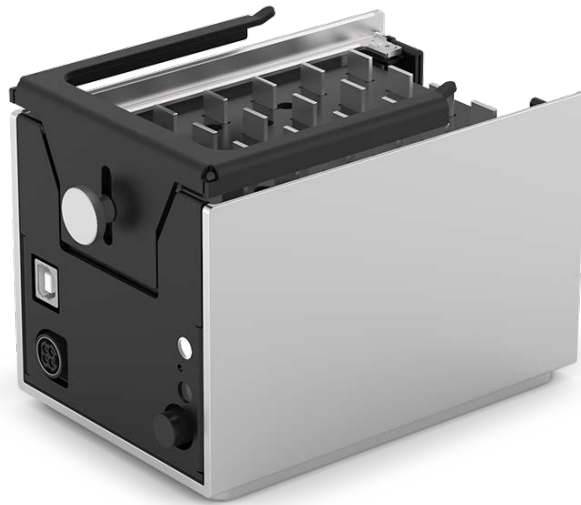
- Utility: Move to (gantry and pipette movement control in deck), Delay, User-specified pause, Homing, Transfer (Basic transfer, Volumes > Pipette Volume, Distribute, Consolidate)
- Variable Pipetting Settings: Speed, Volume, Count, Dispose
- Synchronized and independent control of 2 robotic pipettes
- Trash Bin
- Calibration block
- Calibration marks on aluminium block
- Lights
- Camera
- Calibration health control system
- 0.1mm movement accuracy
- Anti-cross-contamination and anti-dropping technology

Brand: *OpenTrons Labworks Inc*

Model: *OT2*



## MAGNETIC MODULE



- High-strength N42 neodymium magnets
- Two adjustable plate brackets
- Compatible with standard and deep well labware from 22 mm to 44 mm, various magnetic bead products, and protocols with volumes from 10  $\mu$ L to 2 mL
- Dimensions (w/o bracket): 133mm x 90mm x 98mm (l/w/h)
- Weight: 3.3 lbs / 1.5 kg
- Module Power Input: 36VDC, 6.1A
- Power Adapter Input: 100-240VAC, 50/60Hz, 4.0A/115VAC, 2.0A/230VAC
- Standard or deep well 96 plates with volumes ranging from 10  $\mu$ L to 2 mL
- The standard plate bracket supports 0.2 mL plate sizes up to 22 mm in vertical height. The deep well bracket can support deep well trays up to 47 mm in vertical height.
- Accuracy Control magnet height in mm
- Magnets' position Outside the microplate wells

Brand: *OpenTrons Labworks Inc*

Model: *GEN2*



# TEMPERATURE MODULE

Standalone Temp Deck



Temp Deck with 1.5 – 2mL Thermal Block



Temp Deck with PCR Thermal Block



Temp Deck with Flat Plate Adapter



- For heating and cooling – temperature range 4-95 °C
- **Includes 3 different aluminium blocks to hold 1.5mL or 2ml tubes, PCR plates or strips, flat bottom microplates**
- Dimensions (w/block): 194 x 90 x 126mm (l/w/h)
- Weight: 3.3 lbs / 1.5kg
- Module Power Input: 36VDC, 6.1A
- Power Adapter Input: 100-240VAC, 50/60Hz, 4.0A/115VAC, 2.0A/230VAC

LCD Display Temperature (C)	Top Plate Accuracy (C)	Top Plate Uniformity (C)	Time-to-Temp from Ambient (minutes)
4	± 1	± 1	4:00
37	± 1	± 0.4	1:00
65	± 1	± 1	2:00
95	± 1.5	± 2	3:00

- Accuracy (C): +/-1 at 4-65 0C, +/-1.5 at 95 0C Accuracy indicates the maximum measured difference between the LCD temperature display and the average measured top plate temperature
- Uniformity +/-0.4-1 at 4-65 0C, +/-2 at 95 0C indicates the temperature variation (+/-) measured across the entirety of the top plate surface
- Time-to-Temp (1-4 min) indicates the total time for the temperature module top plate to reach the desired steady state temperature after starting from ambient conditions
- Environmental Test Conditions: Data shown was collected at 22°C and 37% relative humidity. Different test conditions may provide for different results.
- Temperature Sensor: KS103J2 Thermistor

Brand: *OpenTrons Labworks Inc*

Model: *GEN2*





## 4-IN-1 TUBE HOLDER SET

Tube Rack Stand with 1.5 - 2.0mL Tube Holder Top



Tube Rack Stand with 15mL Tube Holder Top



Tube Rack Stand with 15 & 50mL Tube Holder Top



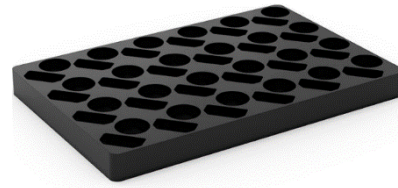
Tube Rack Stand



Tube Rack Stand with 50mL Tube Holder Top



Example CNC Top Plate



- 2 Bases
- 4 Adaptors for:
  - 24x1.5ml or 2ml tubes
  - 6x15ml & 4x50ml
  - 15x15ml tubes
  - 6x50ml tubes
- The adaptor snaps securely on the base stand, which fits directly on the deck of OT-2
- The Tube Rack Set is not autoclavable

Brand: *OpenTrons Labworks Inc*

Model: 4-IN-1



## BIOSHAKE 3000-T ELM



- For heating RT-99 °C and/or orbital shaking 200-3000 rpm
- Price includes one adaptor for PCR plates
- Compatible with any labware by easily changing the adaptor
- Mixing frequency 200 to 3,000 rpm (microplates)
- Mixing orbit constant 2.0 mm diameter
- Speed setting resolution linear increments
- Mixing regulation accuracy  $\pm 25$  rpm
- Zero position
- Automatically controlled in the stopping process with final fixing
- Stopping time selectable from 3 sec (strong stopping) to 30 sec (soft stopping)
- Zero position accuracy  $\pm 0.1$  mm
- Temperature range ambient to 99°C
- Temperature setting 0.5°C or 1°C increment (adjustable in the setup)  
adjustable from 0°C to 99°C
- Temperature accuracy  $\pm 0.1$ °C
- Temperature uniformity:
  - $\pm 0.5$ °C at 45°C
  - $\pm 0.7$ °C at 75°C
  - $\pm 1.0$ °C at 95°C
- Heat-up time ca. 7°C/min (from ambient to 95°C in 10 min)
- Open modus: Ready for free handling with robot gripper
- Closed modus: Strong diagonal centered fixation
- ELM Position Accuracy:  $\pm 0.1$  mm
- Electronic control board: Completely accommodated in the smallest housing
- Non-external controller or components
- Controller: Micro controller (16-Bit-RISC-Prozessor)
- Operation control: Remote controlled



- User interface: RS232 interface (2.0 m connecting cable)
- Status & alarm LED in front (green = ok, red = alarm)
- Operating Voltages:
  - 24 VDC input
  - I<sub>max</sub>: 4.5 A
  - P<sub>eff</sub>: 85 Watt
  - P<sub>max</sub>: 108 Watt
- External power supply unit (CE/UL/CSA approved, 85-264 VAC, 47-63 Hz, 120W, IEC/EN60320-1 C14)
- Housing Material
- Aluminum anodized
- Environment operating range +5°C to 45°C (80 % max. relative humidity)
- Dimensions (W x D x H): 142 mm x 99 mm x 62 mm (5.59 x 3.89 x 2.44 inch)
- Weight: 1.5 kg (3.3 lbs).
- Ideal for 96 well microplates
- High-precision heating from ambient to 99°C
- Perfected thermo adapters
- Fast mixing from 200 up to 3,000 rpm
- Plate locking ELM
- Sensored zero-position

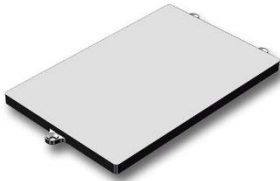
Brand: *Quantifoil Instruments GmbH*

Model: *BioShake 3000-T ELM*



## ADAPTOR FOR BIOSHAKE 3000-T ELM

1808 - 1021



1808 - 1022



1808 - 1024



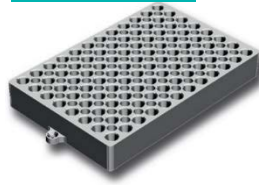
1808 - 1031



1808 - 1032



1808 - 1041



1808 - 1051



1808 - 1121



1808 - 1131



1808 - 1141



1808 - 1151



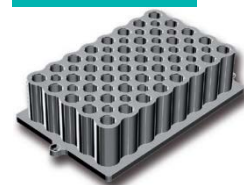
1808 - 1121



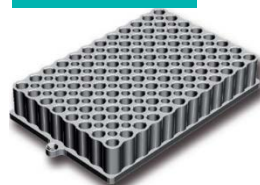
1808 - 1062



1808 - 1063



1808 - 1064



1808 - 1067



### This is valid for:

- PCR plates
- Microwell plates
- 384-well plates
- Deep-well plates
- Tubes (any size)
- Custom orders available (price will change)

### Standard:

- 2016-1021 | Microplate. Flat bottom standard
- 2016-1022 | Microplate. Flat bottom High Base
- 2016-1032 | Microplate. 96 well round bottom



**PCR Microplates:**

- 2016-1041 | PCR plate. Eppendorf® 96/150µl
- 2016-1042 | PCR plate. Bio-Rad® 96/150µl
- 2016-1051 | PCR plate. Eppendorf® 384/40µl

**Deep Well & Storage Plates:**

- 2016-1121 | Deep well. Eppendorf® 96/500-1000 µl
- 2016-1141 | Deep well. BRAND®/Trefflabs® 96/1.1 ml
- 2016-1151 | Deep well. NUNC®/Axygen® 96/2.0 ml
- 2016-1161 | Deep Well. Axygen® 96/0.6 ml
- 2016-1171 | Deep Well. Abgene® 96/2.2 ml
- 2016-1172 | Deep Well. Abgene®/HJ-Bio®/Greiner® 96/0.8-1.2 ml
- 2016-1181 | Deep Well. Sarstedt® 96/2.2 ml Megablock
- 2016-1201 | Deep well. Corning® 96/320 µl
- 2016-1214 | Deep well. Axygen®/Corning®/StarLab® 96/2.0 ml
- 2016-1215 | 24 well. Whatman® Uniplate
- 2016-1217 | Storage plate. NUNC® 96/450 µl
- 2016-1218 | Deep well. Apricot® 96/2.2 ml

**Conical Shape:**

- 2016-1060 | Tubes. 15x 5.0 ml
- 2016-1061 | Tubes. 24x 2.0 ml. 15x 0.5 ml
- 2016-1062 | Tubes. 24x 1.5 ml. 15x 0.5 ml
- 2016-1063 | Tubes. 40x 0.5 ml. 28x 0.2 ml
- 2016-1064 | PCR Tubes/Stripes/Plates. 96x 0.25 ml
- 2016-1093 | FALCON® tubes. 5x 50 ml
- 2016-1094 | FALCON® Tubes. 12x 15 ml

**Cylindrical Shape:**

- 2016-1069 | Vials. 35x 2.0 ml Ø 10.8 mm
- 2016-1071 | Vials. 35x 2.0 ml Ø 12 mm
- 2016-1080 | Vials. 35x 2.0 ml Ø 12.5 mm
- 2016-1078 | Vials. 24x 2.0 ml Ø 12.7 mm
- 2016-1081 | Vials. 30x 2.0 ml Ø 13 mm
- 2016-1072 | Vials. 24x 4.0 ml Ø 15 mm
- 2016-1073 | Vials. 20x 4.0 ml Ø 17 mm
- 2016-1074 | Vials. 20x 6.0 ml Ø 19 mm

Brand: *Quantifoil Instruments GmbH*

Model: *Adaptors*



## SCARA ROBOTIC ARM



- High-precision robotic arm type SCARA
- For labware transferring between different systems such as liquid handlers, modules, linear actuators, plate sealers and seal removers on upper and/or lower bench of AMGEL
- Pneumatic gripper with custom fingers for SBS labware
- Air pump system
- Access areas:
  - a) On both the right and the left side of both liquid handling platforms.
  - b) On all third-party integrated devices
  - c) **Outside the liquid handling robot to allow integration of devices without reducing SBS positions from the liquid-handler**
- Repeatability 0.02mm
- Adaptable-customizable gripper fingers for any labware
- Independent function of the robotic arm/gripper from liquid handling robot(s) to allow non-stop operation
- Custom labware racks e.g., for swabtubes, coverslips, madli-tof plates, petri dishes etc.
- Unlimited custom-made options compatible with gripper fingers
- Payload: 1.5kg
- Collaborative support sensor-free collision detection and teaching and playback Input
- Requirements of Power Adapter: 100 -240 V, 50/60 Hz
- Communication interface:
  - a) Ethernet
  - b) RS-232C
- System Linux
- Compatible with plate stackers/hotels and carousels



**EFEVRE TECH LIMITED™**

Your necessity, our innovation.

**ALL RIGHTS RESERVED 2023**

[www.efevre.com](http://www.efevre.com)

- Mechanical limitation:
  - Rear arm -90°- 90°
  - Forearm -140°-140°
  - Z-axis screw 0mm- 250mm

Brand: *Shenzhen Yuejiang Technology Co., Ltd*

Model: *DOBOT M1*



## **XARM ROBOTIC ARM**



- Durable Collaborative robots accelerating your business:
  - a) Ultra-cost-effective design to achieve your tight budget.
  - b) Built with the industrial-grade actuators, and born for 24/7 working.
  - c) Built-in control box for extremely space saving.
- Flexible deployment with safe feature:
  - a) Hand teaching, lightweight, space-saving and easy to re-deploy to multiple applications without changing your production layout. Perfectly for recurrent tasks.
  - b) Collision detection are available for all of our robots. Your safety is always the top priority.
- Graphical interface for beginner-friendly programming:
  - a) Compatible with various of operation systems, including macOS and Windows.
  - b) Web-based technology compatible with all major browsers.
  - c) Drag and drop to create your code in minutes.
- Powerful and open source SDK at your fingertips:
  - a) Fully functional open-source Python/C++ SDK provides more flexible programming.
  - b) ROS/ROS2 packages are ready-to-go.
  - c) Example codes help you to deploy the robotic arm smoothly.
- Seamless integration with official accessories:
  - a) The robotic arm comes with official accessories which seamlessly integrate with our robots, such as ripper Lite and Vacuum Gripper Lite.

Brand: *UFactory*

Model: *XARM Robotic Arm Lite 6*





## CELL-CULTURE INCUBATOR



- Maximum precision, by restraining human handling inconsistencies
- Great flexibility, while taking up minimal space in your automated deck
- Allow labs to create and maintain the ideal physiological conditions for cell growth, by controlling gas atmosphere, humidity and temperature.
- Powerful and scalable
- Controlled and protected
- Small and flexible
- Dimensions: 291 mm H x 250 mm W x 410 mm L
- 4 microplates (for 96 well plates less than 20 mm in height)
- 2 deep well options (up to 23 mm in height)
- Allows the use of microtiters and / or vials

Brand: *INHECO Industrial Heating & Cooling GmbH*

Model: *SCILA CO2 4-Position cell incubator*



## **ON-DECK THERMAL CYCLER-ODTC® 96 XL**



- Dimensions (H x W x L): 124.3 mm x 156.5 mm x 248 mm
- Weight: Approx. 7.5 kg
- 96 well plate format with Width: 156.5 mm, Length: 248 mm
- Free programmable temperature profiles and lid temperature
- Horizontally opening heated lid, no interference with gripper and pipetting head
- Automated adjustment of lid pressure for different disposables and sealing options
- Plate ejection: Automated plate ejection mechanism with exchangeable ejection bars
- ODTC® device DC input: 24 Vdc / 1200 W \*1)
- Protection class: III (according to DIN EN 61140)
- EMV device class: Group 1 / class A (industrial requirements)
- PCR plates: 96 and 384 well VCM® optimized for specific PCR plates (other PCR plate formats only on request)
- Maximum volume during PCR: 100µl/well for 96 well version
- ODTC® lid: Opens and closes by horizontal move and is heated to avoid condensation running temperature profiles with open ODTC® Lid possible
- Lid pressure: Automated adjustment of lid pressure for different disposable and sealing options
- Thermal specifications
- Temperature range thermal block: +4°C to +99°C
- Temperature range heated lid: +30°C to +115°C
- Maximum average heating rate: 4.4 K/sec
- Maximum average cooling rate: 2.2 K/sec
- 95°C, even with asymmetrical loading of the PCR plate
- Temperature range: +4 °C to +99 °C [+39 °F to +210 °F] \*2)



- Temperature accuracy:  $\pm 0.30$  K at  $+55$  °C ( $+131$  °F)
- Temperature uniformity:
  - $\pm 0.20$  K at  $+55$  °C ( $+131$  °F)
  - $\pm 0.20$  K at  $+72$  °C ( $+162$  °F)
  - $\pm 0.20$  K at  $+95$  °C ( $+203$  °F)
- Heating rate average (slope): Max. 4.4 K/sec
- Cooling rate average (slope): Max. 2.2 K/sec
- Adjustable heating & cooling rate: from 0.1 K to 4.4 K/sec
- Lid temperature: Adjustable between ambient temperature
- $+5.0$  K to  $+115$  °C ( $+5.0$  K to  $+239$  °F)
- Lid default temperature:  $+110$  °C ( $+230$  °F)

**Specifications - ODTC® Power & Control Unit (PCU):**

- Dimensions (W x D x H horizontally placed): 256.5 mm x 414.5 mm x 58 mm \*3)
- Interface: SiLA, Ethernet (RJ45 connector)
- Weight: Approx. 5.5 kg
- AC input: 100-240 V / 50/60 Hz (1250 W)
- DC output: 24 Vdc / 1200W
- Protection class: I (according to DIN EN 61140)
- Fuses: 2 x T12A / 250 V

**Environmental Conditions - ODTC® and ODTC® Power & Control Unit (PCU):**

- Tolerable relative humidity:
- Operation: 30-80% \*4)
- Transportation and storage: 30-80% \*4)
- Temperature:
  - Operation:  $+15$  °C to  $+32$  °C [ $+59$  °F to  $+90$  °F]
  - Transportation and storage:  $-10$  °C to  $+60$  °C [ $+14$  °F to  $+140$  °F]

Brand: *INHECO Industrial Heating & Cooling GmbH*

Model: ODTC® 96



## **AUTOMATED PLATE SEALER**



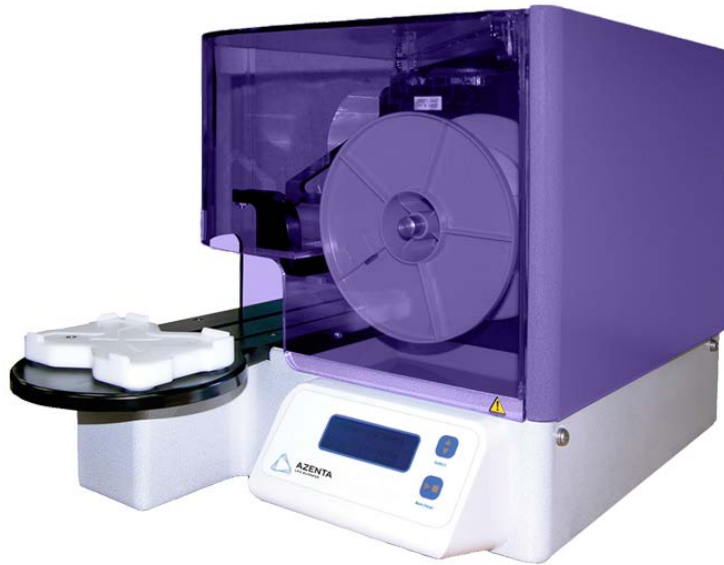
- Dimensions (W x L x H): 230 x 507 x 276mm
- Sealing temperature range: 100-195°C
- Sealing time range: 0.1-10 sec
- Weight (without roll): 27kg
- Power supply V in AC: 100-240V
- Power supply V out: DC 24V 320W
- Power consumption: 700W (max)
- Working temperature range: 10-30°C
- Operating humidity (RH): 0-85%
- Operating humidity (RH): 0-85%
- Connection: RS-232 serial port, USB port

Brand: *Azenta Life Sciences, formerly Brooks Life Sciences*

Model: *a4S (4ti-0665)*



## **AUTOMATED PLATE SEAL REMOVER**



- Seal removal capacity up to 400 per Tape® roll
- Seal verification sensor reflective with sensitivity adjustment
- Communication serial RS232
- Motion parameters XTape® adhere time, se-seal speed, plate output orientation, begin peel location
- General parameters auto XTape® advance, plate verification, menu language
- Weight: 35kg (76lbs)
- Power requirements:
  - 115VAC, 4A, 60Hz
  - 230VAC, 2A, 50Hz
- Throughput up to 200 plate seal removals per hour
- Automatically removes any plate seal minimizing cross contaminations. Avoid cross contamination from seal puncturing.

Brand: *Azenta Life Sciences, formerly Brooks Life Sciences*

Model: *Xpeel BROOKS Seal remover (XP-A\_230V)*



## **ROBOTIC COOLING CENTRIFUGE**



**Sigma Laborzentrifugen GmbH, Germany, Sigma 4- 5KRL Refrigerated centrifuge, designed for use with laboratory robotic platform.**

- Cooling-Refrigerated centrifuge
- Multiple buckets - adaptable centrifuge for any labware (tubes, plates, custom)
- Centrifuge can be also manually used
- Simultaneous centrifugation of 4 microplates
- Maintenance free brush- less motor with a speed range of 4700 rpm
- Universal speed range for swing-out and angle rotors
- Microcontroller with automatic rotor identification
- LCD-Display and single knob control for the preselection of all centrifuge parameters e.g., rpm, gravitational field, rotor, bucket, time, temperature
- The patented bucket lifting device is one of its unique features, ensuring that after each centrifugation run, the buckets return to horizontally and vertically reproducible positions at the loading/ unloading port. This innovation makes a decisive contribution to boosting process reliability.
- Up to 10 user programs,10 each linear and quadrate curve of acceleration and deceleration
- Possibility to precool the rotors at standstill
- Simple starting of the actual program or repetition of the last run by only 1 button
- Cooling machine for temperatures deeper than 4°C at maximum speed (rotor dependent)
- Technical mechanism complying with German Safety Regulations (UVV)
- Meets the requirements of the equipment safety law according to the general requirements IEC 1010 part 1 and part 2-020
- Quality mark CE



**For use with robotic platform:**

- The centrifuge provides for positioning of the rotor at low speed in 2-4 positions which can be preselected via PC. The rotor would stop in these positions after every run
- The centrifuge provides for magnetic stopping of the rotor
- Motor driven lid locks
- The lid has an opening for the rotor arm which is electrically closed
- Serial interface for communication between PC and centrifuge
- Programming of the centrifuge occurs via IST electronic control or via a PC
- Control commands are coming from a PC:

Max. Capacity (ml)

Swing-bucket rotor: 140 blood collection tubes / 16 microtiter plates

Max. RZB: 4,470

Max. Speed (min -1): 4,700

Min. Speed (min -1): 100

Noise level at max. Speed (approx.) [Db (A)]:

Swing-out rotor 91318 with bucket 91319 ≤ 59

Max. Acceleration time [sec]:

Swing-out rotor 91318 with bucket 91319 ≤ 23

Min. Braking time [sec]:

Swing-out rotor 91318 with bucket 91319 ≤ 24

Power consumption (W): 2,200

Height x width x depth (mm): 406 x 677 x 680

Height with open cover (mm): 890

Weight without rotor (kg): 135

Brand: *Sigma Laborzentrifugen GmbH*

Model: *Sigma 4- 5KRL*



## **SWING-OUT ROTOR & 4 BUCKETS FOR MICROTITER PLATES**



An extensive selection of autoclavable and corrosion-free rotors with capacities from 1.5ml to 1,000ml and up to 16 microplates.

Coupled with these are accessories including bucket holders for both conical flasks and flat bottom tubes and sleeves.

### **Safety and robustness:**

- Sturdy construction, two to three layered lids for noise reduction and safe operation
- Lid drop protection for ease and safety when loading or unloading sample
- Emergency lid-lock release in case of mains power loss or sudden stoppage
- Key lock function to prevent unintentional parameter modification during operation
- Automatic rotor detection and warning for excess speed and over-heating
- Autoclavable and corrosion-free rotors
- Imbalance detection and warning with count of imbalance error

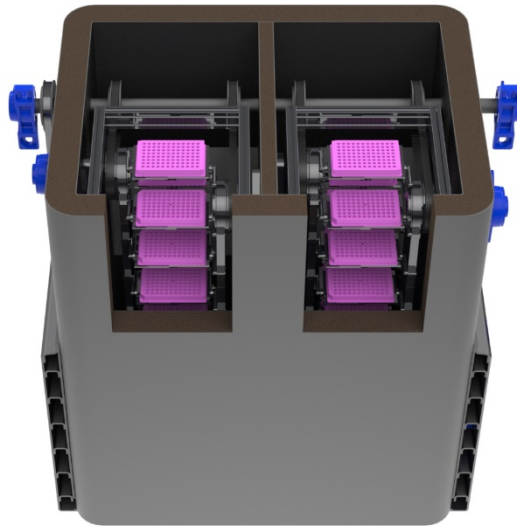
Brand: Sigma Laborzentrifugen GmbH

Model: *modified to be suitable for Sigma 4- 5KRL*





## **ROBOTIC FRIDGE / FREEZER**



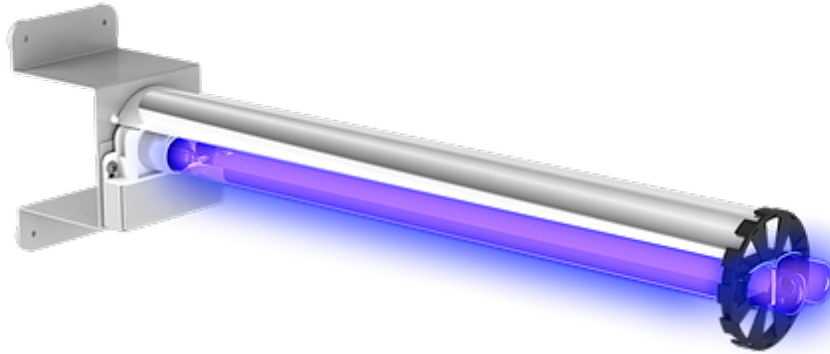
- Custom built to your needs
- Increase walk-away time by stocking labware in controlled temperature
- 24-hour non-stop workflow
- Automatic loading of labware by AMGEL's robotic arm
- Temperature range: +4 °C until - 20 °C
- 32 SBS Plates

Brand: LICONIC and *EFEVRE TECH LTD*

Model: *CUSTOM*



## **UV-C GERMICIDAL DECONTAMINATION LED LIGHTS WITH TIMER**



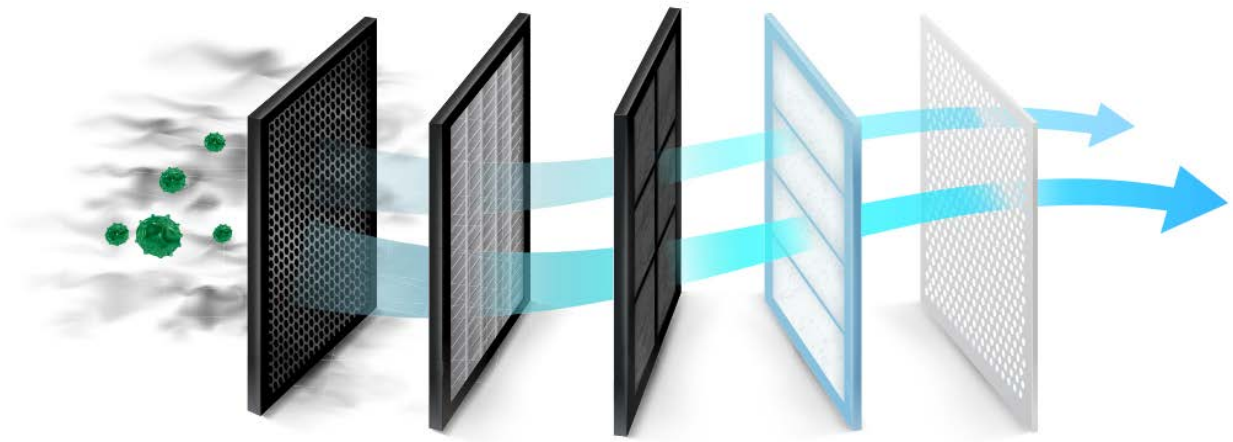
- Focused LED beam minimized plasticware component tear.
- Timer for fixed 15 minutes.
- Timer for increments of 5 minutes up to 60 minutes total per run.

Brand: *EFEVRE TECH LTD*

Model: *UV-C LED STRIP WITH TIMERS*



## **FILTER SYSTEM**



**STEP 1:**  
Pre-Filter

**STEP 2:**  
Activated  
Carbon Filter

**STEP 3:**  
True HEPA Filter

- Pre-Filter – Remove large dust particles from the air
- HEPA Filter – High-Efficiency Particulate Absorbing (HEPA) filter, composed of a mat of randomly arranged fiberglass fibres
- Active Carbon Filter – Clean the air from toxic fumes

Brand: *OpenTrons Labworks Inc, Terra Universal Inc and TECAN*

Model: *CUSTOM*



# **HIGH-END, INDUSTRIAL-GRADE ELECTRICAL AUTOMATION**



Development by EFEVRE TECH LTD **for power management and safety**

- All essential electrical connectivity of each electronic component into the platform
- Capacity to add more devices
- Electrical boards
- Electronics and computers for robotic control
- Emergency stop system for safety of user
- Timers
- High-end Power supplies and relays
- Electrical wiring diagram signed by authorized electrician

Brand: EFEVRE TECH LTD

Model: CUSTOM



**EFEVRE TECH LIMITED™**

Your necessity, our innovation.

**ALL RIGHTS RESERVED 2023**

[www.efevre.com](http://www.efevre.com)

## LAPTOP OR TABLET



- Windows Operating system
- Microsoft office
- Containing GUI (graphical user interface) for controlling AMGEL platform

Brand: ANY

Model: WINDOWS OPERATIONAL SYSTEM



## **CUSTOM RACKS**



- Suitable for microtiter plates and conventional tubes.
- Adaptable for non-conventional or custom labware.
- Compatible with robotic arm and liquid handlers.

Brand: *EFEVRE TECH LTD*

Model: *Universal, 80mm height, adaptor for labware.*



## About our **Mission**

EFEVRE TECH LTD is a company based in Cyprus, focusing on the design, manufacture and retail of prototypes and innovative devices in the field of Health Science, Biology and Robotics.

Embracing natural sciences through a justifiable philosophic analogy and channelling our passion towards an anthropocentric approach EFEVRE TECH aims to empower life-science towards added value research and development. High Tech, autonomy, versatility and agility are fuelling our vision and mission towards the production of products and services that can add value and substance to an array of technological and scientific ecosystems.

## About our **Product**

AMGEL's key features are versatility, autonomy, its compact size and attractive price. AMGEL's magnitude offers the capacity to be fully adaptable and/or expandable by the following topics:

- Integration of third-party devices
- Custom Graphical User Interface (GUI) design
- Optimization of every protocol
- Reagent kits and consumable agnostic
- Unlimited custom protocol designing

## GET IN TOUCH!

**Location:**  
104 Kyklikei Leoforos street  
6056 Larnaca, Cyprus

**Phone Number:**  
+357 24366277

**Website:**  
[www.efevre.com](http://www.efevre.com)

**Email:**  
[info@efevretech.com](mailto:info@efevretech.com)



**EFEVRE TECH LIMITED™**  
Your necessity, our innovation.

**ALL RIGHTS RESERVED 2023**  
[www.efevre.com](http://www.efevre.com)



## GET IN TOUCH!

**Location:**  
104 Kykliki Leoforos street  
6056 Larnaca, Cyprus

**Phone Number:**  
+357 24366277

**Website:**  
[www.efevre.com](http://www.efevre.com)

**Email:**  
[info@efevretech.com](mailto:info@efevretech.com)